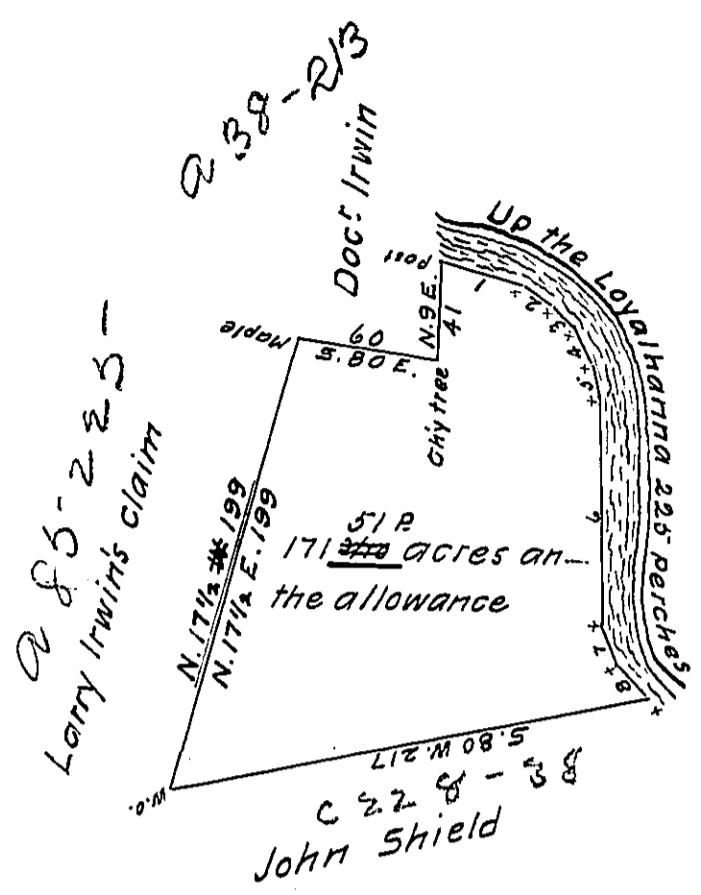


FORM NO. 1.

No of Courses	Courses up	Loyalhanna	Distance
1	5.73	E.36	
2	5.59	E.15	
3	5.42	E.14	
4	5.26	E.15	
5	5.9	E.12	
6	5.2	W.98	
7	5.22	E.17	
8	5.44	E.18	
Total dist.			225



In pursuance of a warrant datet the 10th of June 1772 survey'd for Daniel McMennamy the above described tract of land containing one hundred & seventy one acres & ^{51 P} ~~3/4~~ of an acre with an allowance proportioned to 6 $\frac{1}{2}$ cent. situate on Loyalhanna Creek adjoining the land of John Shield & Doct^r Irwin, including his improvement in Westmoreland County survey'd the 4th of August 1772 $\frac{1}{2}$.

Robert M^cCrea D.S
D.S.

To John Lukens Esq^r
S. Gen^l

W^t to DL McMamama

IN TESTIMONY that the above is a copy of the original remaining on file in the Department of Internal Affairs of Pennsylvania, made conformably to an Act of Assembly approved the 16th day of February, 1833, I have hereunto set my Hand and caused the Seal of said Department to be affixed at Harrisburg, this eleventh day of June 1912

Henry Houck
Secretary of Internal Affairs.